

ALU Cut guard kit

Model
ALU Cut guard kit

Part number
6158111480



Model	Part number
KA16100B6FVK	6151704700
KA16120-9	6151704430
KA16120A45	6151704550
KA16120A45VK	6151704560
KA16120A5	6151704370
KA16120A5VK	6151704380
KA16120B5	6151704390
KA16120B5VK	6151704540
KA16120H5	6151704440
KA16120H5K	6151704340
KA16135C4FK	6151704410



WARNING

**EN****WARNING**

To reduce the risk of injury, before using or servicing tool, read and understand the following information as well as separately provided safety instructions (Item number: 377713). Save all warnings and instructions for future reference.



6

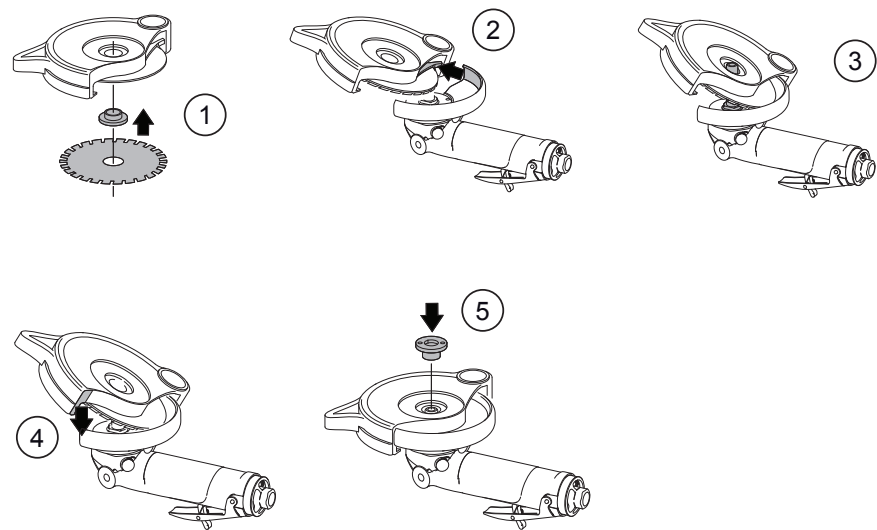
Find more information and your Desoutter contacts on:

www.desouttertools.com

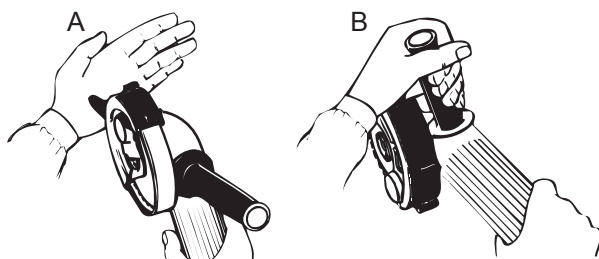
Software and documentation available at:

<http://resource-center.desouttertools.com>

INSTALLATION



OPERATING MODE



Original instructions.

© Copyright 2016, Ets Georges Renault 44818 St Herblain, FR

All rights reserved. Any unauthorized use or copying of the contents or part thereof is prohibited. This applies in particular to trademarks, model denominations, part numbers and drawings. Use only authorized parts. Any damage or malfunction caused by the use of unauthorised parts is not covered by Warranty or Product Liability.

STATEMENT OF USE

This product is designed for sawing / trimming.

No other use permitted.

For professional use only.

SAFETY INSTRUCTIONS



WARNING

When using Alu-Cut Guard Kit together with KA16 it is possible to use the tool for cutting with a circular saw blade. In any other configuration it is forbidden to use a grinder for cutting with a circular saw blade.

- Always make sure that the operator understands and follows the instructions of both grinder and guard.
- Before making any adjustment (e.g. installing and setting the ALU Cut guard) disconnect the machine from the compressed air line.
- Before each start of the tool check that:
 - The protection guard is moving freely.
 - That the guard is closing quickly when it is released.
- Regularly inspect the circular saw blade for damage and cracking. When blunt, see RE-sharpening. Blunt cutters will run hot. If damaged or cracked, replace with a new one.
- Never use common circular saw blades, they may lead to a total loss of application control with lethal wounds or property loss as a result.
- Use barriers to protect others and properties from wheel fragments and grinding chips. Hot metal chip spray or sparks may set inflammable material on fire.

GETTING STARTED

ALU Cut is an attachment for KA16 for hand held cutting-off and other material removal operations in Aluminium.

The ALU Cut attachment shall only be used together with the special 125 mm circular carbide tipped cutters intended for such operations.

The ALU Cut spring loaded protection guard is working outside the standard steel wheel guard of KA16 to prevent unintended human touching of the rotating circular saw blade.

The ALU Cut attachment is mounted with a ball bearing, a center ring and spacing ring on the spindle only.

The quick closing action when released is based on a spring acting with a tab on the end of the standard wheel guard.

INSTALLATION

- See page 4.

Mounting saw blade and alu-cut guard



The alu-cut guard must only be used together with the special 125 mm circular carbide tipped cutters intended for cutting or milling in aluminum.

- Discard the aluminium adapter, it is used for cut-off wheels.

- 1 Insert the brass adapter into the bearing. Mount the saw blade to the alu-cut guard and brass adapter.



Make sure the saw blade rotates in the correct direction. Compare with the rotation of the tool.

- 2 Place the tool's wheel guard next to the stop-pin on the alu-cut guard's spring loaded disc. The stop-pin is located at the dust extraction side of the alu-cut guard. Push the spring loaded disc against the wheel guard.
- 3 Move the alu-cut guard over the spindle.
- 4 Press the alu-cut guard to the correct position.



The brass adapter and wheel must have a tight and correct fit.

- 5 Fit and tighten with the correct flange nut.

OPERATING MODE

- See page 5.
- A The attachment cover in the closed “safety position”.
- B The attachment cover in the open “operating position”.
- Before starting the tool hold the tool with a firm grip in the throttling hand.
- Lift the attachment cover with the open support hand. (A)
- Lock the cutter attachment in an open position by holding the tool support handle in a steady grip and resting the cover handle inside your hand. Then start the tool. (B)
- Always use a proper two hand grip during operation and mind your balance.
- Do not overheat the cutter during operation. The plastic protection and the blade itself may be damaged.

Re-sharpening

These cutters are designed with a (minus 4 degree) negative cutting edge angle and a cutting depth limiting step for low operator reaction forces.

- Re-sharpen edges on the chipping side in the tool room.
- For cutters with screwed on edges, loosen the screw and rotate the bit to find a new sharp cutting edge.

Cutter blade

Part number	Description	Remarks
6158111470	Cutter 125 mm tooth 4 mm	Cutter with tooth radius 2 mm, blade thickness 4 mm for milling applications
6158111460	Cutter 125 mm tooth 2 mm	Cutting off disc, blade thickness 2 mm

More Than Productivity